

2022 MAZDA CX-5



PRICE AND SPECIFICATION GUIDE



WELCOME...

When you drive a Mazda, you never drive alone. The feeling of togetherness, which we call Jinba Ittai, runs deep in Mazda CX-5. Designed with a human-centric approach, superior craftsmanship and innovative Skyactiv Technology that improves responsiveness, heightens driving pleasure and builds an enduring relationship between car and driver. The outstanding exterior and interior design will awaken the driver in you every time you see it. It's the Mazda way.

The Mazda CX-5 is our stylish award winning SUV that provides a smooth, refined ride coupled together with Mazda's infamous driving experience. Designed around Mazda's 'car and driver' as one philosophy, the Mazda CX-5 has been designed to fit into a variety of lifestyles. Whether its driving the morning commute, driving the kids to school, or even packing your bags and hitting the road for a weekend break, the Mazda CX-5 will provide you with the flexibility to fit your lifestyle.

Stylish and tough

Designed with the powerful stance and the bold toughness of an SUV, the strong styling provides the car with a road presence and looks that will have you admiring this SUV from every angle. Inside, you will find high levels of specification as standard, including Cruising Traffic Support, Mazda Radar Cruise Control, Mazda Connect infotainment, Apple CarPlay and Android connectivity, as well as a comfortable and commanding driving position.

Safety

When it comes to safety, you could be in no safer hands. The Mazda CX-5 has been awarded the maximum five-star rating by Euro NCAP. With superb safety equipment as standard such as Advanced Smart City Brake support, Blind Spot Monitoring and Rear Cross Traffic Alert, for a more re-assuring drive, everytime.





Discover more about the 2022 Mazda CX-5. The price and specification guide has been designed to help you find out more about the Mazda CX-5's key features, technical information and prices.

So what are you waiting for?



THE LATEST IN TECHNOLOGY & CONVENIENCE

MAZDA CONNECT

The latest in-car infotainment

Mazda Connect allows for seamless connectivity between you and your Mazda. Information is displayed on a beautifully clear central 10.25" screen which is perfectly positioned at eye level.

Mazda Connect is designed to enable intuitive operation of infotainment features and functions, such as the DAB radio, Mazda Navigation and Apple Carplay or Android Auto.



MULTIMEDIA COMMANDER

Maintain focus on the road ahead

Rather than utilising a touchscreen, which can distract from the driving experience, the Commander control interface allows the driver to maintain focus on the road ahead while seamlessly controlling the functions of inside the vehicle.



APPLE CARPLAY® & ANDROID AUTO™ Smarter, safer way to use your smartphone

With Apple CarPlay®, get easy access to Apple Music, Maps, Messages, and make phone calls with Siri or through the car's Multimedia Commander.

Android Auto™ also allows you to access your favourite music and messaging apps and Google Play Music. Google Assistant voice control helps you send and receive messages, make calls, get directions and plan your day while you keep your eyes safely on the road.

BOSE PREMIUM SOUND SYSTEM

Like our cars, the Bose 10 speaker Premium sound system is made to move you.

Featured on our Sport, Sport Black & GT Sport grades, the high performance speakers make you feel like you're at the front row of your favourite concert, making you feel immersed in whatever you're listening to.

The premium sound system includes all of the latest Bose technologies such as Centerpoint® signal processing and AudioPilot® noise compensation technology which all contribute to an immersive entertainment experience.



THE FLEXIBILITY TO FIT INTO YOUR LIFE

WEEKEND AWAY, PACK YOUR BAGS

Your companion for the perfect weekend away. With a luggage capacity of up to 522 litres, the CX-5's generous boot allows you to bring everything that you need.

Practicality is further enhanced with a 40:20:40 split rear bench to accommodate those larger items.

Featured on Sport grades and above, convenience is increased with a powerlift tailgate for handsfree access to the boot.



2022 MAZDA CX-5 PRICING

Skyactiv-G Petrol

	PRICE	VAT	P11D VALUE	FIRST YEAR VED & DVLA FIRST REG FEE*	ESTIMATED 'ON THE ROAD' RETAIL	CO ₂ EMISSIONS (G/KM)~	BIK TAX (%)^	2021/22 MONTHLY TAX LIABILITY 20%/40%	INSURANCE GROUP
Mazda CX-5 165ps 2WD SE-L	£22,695.83	£4,539.17	£27,235	£610	£27,845	154	34%	£154/£309	TBC
Mazda CX-5 165ps 2WD SE-L Auto	£24,029.17	£4,805.83	£28,835	£610	£29,445	164	36%	£173/£346	TBC
Mazda CX-5 165ps 2WD Newground ¹	£23,529.17	£4,705.83	£28,235	£610	£28,845	153	34%	£160/£320	TBC
Mazda CX-5 165ps 2WD Newground Auto ¹	£24,862.50	£4,972.50	£29,835	£610	£30,445	165	37%	£184/£368	TBC
Mazda CX-5 165ps 2WD Sport	£25,279.17	£5,055.83	£30,335	£610	£30,945	153	34%	£172/£344	TBC
Mazda CX-5 165ps 2WD Sport Auto	£26,612.50	£5,322.50	£31,935	£610	£32,545	166	37%	£197/£394	TBC
Mazda CX-5 165ps 2WD Sport Black	£26,945.83	£5,389.17	£32,335	£610	£32,945	153	34%	£183/£366	TBC
Mazda CX-5 165ps 2WD Sport Black Auto	£28,279.17	£5,655.83	£33,935	£610	£34,545	166	37%	£209/£419	TBC
Mazda CX-5 165ps 2WD GT Sport	£27,279.17	£5,455.83	£32,735	£610	£33,345	153	34%	£185/£371	TBC
Mazda CX-5 165ps 2WD GT Sport Auto	£28,612.50	£5,722.50	£34,335	£610	£34,945	166	37%	£212/£423	TBC
Mazda CX-5 194ps AWD GT Sport Auto	£30,445.83	£6,089.17	£36,535	£950	£37,485	182	37%	£225/£451	TBC

Skyactiv-D Diesel

	PRICE	VAT	P11D VALUE	FIRST YEAR VED & DVLA FIRST REG FEE*	ESTIMATED 'ON THE ROAD' RETAIL	CO ₂ EMISSIONS (G/KM)~	BIK TAX (%)^	2021/22 MONTHLY TAX LIABILITY 20%/40%	INSURANCE GROUP
Mazda CX-5 150ps 2WD SE-L	£24,195.83	£4,839.17	£29,035	£275	£29,310	147	33%	£160/£319	TBC
Mazda CX-5 150ps 2WD SE-L Auto	£25,529.17	£5,105.83	£30,635	£610	£31,245	160	36%	£184/£368	TBC
Mazda CX-5 150ps 2WD Sport	£26,362.50	£5,272.50	£31,635	£275	£31,910	147	33%	£174/£348	TBC
Mazda CX-5 150ps 2WD Sport Auto	£27,695.83	£5,539.17	£33,235	£610	£33,845	160	36%	£199/£399	TBC
Mazda CX-5 184ps 2WD Sport	£27,112.50	£5,422.50	£32,535	£275	£32,810	147	33%	£179/£358	TBC
Mazda CX-5 184ps 2WD Sport Auto	£28,445.83	£5,689.17	£34,135	£610	£34,745	160	36%	£205/£410	TBC
Mazda CX-5 184ps AWD Sport Auto	£29,779.17	£5,955.83	£35,735	£950	£36,685	173	37%	£220/£441	TBC
Mazda CX-5 184ps AWD GT Sport	£30,445.83	£6,089.17	£36,535	£610	£37,145	165	37%	£225/£451	TBC
Mazda CX-5 184ps AWD GT Sport Auto	£31,779.17	£6,355.83	£38,135	£950	£39,085	173	37%	£235/£470	TBC

Factory-fitted Safety Pack option

	BASIC PRICE	VAT	RRP
Safety Pack Includes; Adaptive LED Headlamps, Driver Attention Alert, Rear Smart City Brake Support & 360° View Monitor ²	£666.67	£133.33	£800

¹Only Available in Arctic White, Zircon Sand Metallic, Polymetal Grey Metallic, Deep Crystal Blue Mica or Machine Grey Metallic paint.

²Only available on Sport models excluding 150ps Diesel models.

~Figures shown are for comparability purposes; only compare fuel consumption and CO₂ figures with other cars tested to the same technical procedures. These figures may not reflect real life driving results, which will depend upon a number of factors including the accessories fitted (post-registration), variations in weather, driving styles and vehicle load. All figures quoted are derived from the latest WLTP test cycle.

*First year rate Vehicle Exercise Duty as of 1 April 2021, includes £55 DVLA first registration fee. ^BIK effective from 6 April 2021.

2022 MAZDA CX-5 GRADE HIGHLIGHTS

SE-L from £27,845

STANDARD FEATURES:

EXTERIOR

- 17" Silver alloy wheels
- Privacy glass (rear and rear side windows only)
- LED headlights with LED daytime running lights
- Signature LED rear combination lights
- Adaptive Front lighting System
- Dusk-sensing lights & rain-sensing front wipers
- Shark-fin antenna
- Heated auto power-folding door mirrors
- Coming home / leaving home lights
- Front & rear parking sensors

INTERIOR

- Premium black cloth trim
- Driver seat manual slide, recline and height adjustment
- Manual driver lumbar support
- Rear seat recline
- Karakuri 40/20/40 fold flat rear seats
- Leather-wrapped steering wheel & gear shift
- Auto-dimming rear-view mirror
- Electronic Parking Brake with Auto hold
- High Meter TFT display



Model shown: Mazda CX-5 165ps 2WD SE-L
in Deep Crystal Blue Metallic paint

INFOTAINMENT

- AM/FM/DAB Radio with 6 speakers
- Integrated Bluetooth®
- Integrated Mazda navigation system with 5-years free European map updates
- Steering wheel mounted audio and Bluetooth® Controls
- 10.25" display with Mazda Connect infotainment
- Multimedia Commander including separate volume dial
- Apple CarPlay® & Android Auto™
- USB connectivity (2x front and 2x rear inputs)
- Connected Services

COMFORT AND CONVENIENCE

- Dual-zone climate control air-conditioning
- Rear air vents
- Engine start / stop button
- Remote central locking
- Drive mode selection (Petrol Automatic only)
- Front & rear electric windows

SAFETY AND SECURITY

- Advanced Smart City Brake Support (SCBS)
- Mazda Radar Cruise Control (Automatic Transmission features Stop and Go) (MRCC)
- Blind Spot Monitoring with Rear Cross Traffic Alert (BSM with RCTA)
- Cruising Traffic Support (CTS)
- High Beam Control (HBC)
- Lane-keep Assist System w/Lane Departure Warning System (LAS/LDWS)
- Auto door locking (drive away)
- Hill Launch Assist (HLA)
- Thatcham Cat.1 Alarm & Immobiliser
- Tyre Pressure Monitoring System (TPMS)
- Front dual stage driver & single stage passenger airbag
- Driver & front passenger side airbags with front & rear curtain airbags
- Front passenger airbag cut-off sensor
- ISOFIX child seat anchorages

NEWGROUND from £28,845

IN ADDITION TO SE-L GRADE, NEWGROUND ADDS:

EXTERIOR

- 19" Black Diamond Cut alloy wheels
- Black mirror caps
- Lime green front grille accent colour
- Silver front and rear under guard & side skirts

INTERIOR

- Black half leatherette seats with black suede inserts and lime green stitching
- 6-way power adjustable driver seat
- Heated front seats (3-stage settings)
- Leatherette interior door trim
- Lime green louvre bezel inner accent
- Reversible waterproof cargo board



Model shown: Mazda CX-5 165ps 2WD Newground
in Zircon Sand Metallic paint.

SPORT from £30,945

IN ADDITION TO SE-L GRADE,
SPORT ADDS:

EXTERIOR

- 19" Black Diamond Cut alloy wheels
- Reversing camera
- Power liftgate
- Power tilt and slide sunroof (165ps Petrol and 184ps Diesel only)

INTERIOR

- Black leather seat trim
- 8-way power adjustable driver seat with memory
- 6-way power adjustable front passenger seat
- Power driver lumbar support
- Heated front seats (3-stage settings)
- Windscreen projected colour Active Driving Display (HUD) with memory
- 7" TFT colour meter set

COMFORT AND CONVENIENCE

- Smart keyless entry
- Wiper de-icer
- Heated steering wheel
- Paddle Shift (Automatic only)

INFOTAINMENT

- Qi Wireless Phone Charging
- Premium Bose surround-sound system with 10 speakers

OPTIONAL SAFETY PACK*

- Adaptive LED Headlights (ALH)
- Driver Attention Alert (DAA)
- Rear Smart City Brake Support (SCBS-R)
- 360° View Monitor



Model shown: Mazda CX-5 165ps 2WD Sport
in Snowflake White Pearlescent paint

SPORT BLACK from £32,945

IN ADDITION TO SPORT GRADE,
SPORT BLACK ADDS:

EXTERIOR

- 19" Black alloy wheels
- Gloss black front and rear lower bumper mouldings
- Gloss black wheel arch and side mouldings
- Red front grille accent colour
- Gloss black signature wing
- Gloss black door mirrors
- Larger tail pipe garnish

INTERIOR

- Black roof lining
- Black leather with red stitching
- Black honeycomb interior decoration panel
- Black honeycomb door trim decoration panel
- Red stitching and accents on door trim, knee pad, console lid, steering wheel and shift boots



Model shown: Mazda CX-5 165ps 2WD Sport Black
in Machine Grey Metallic paint

GT SPORT from £33,345

IN ADDITION TO SPORT GRADE,
GT SPORT ADDS:

EXTERIOR

- 19" Bright alloy wheels
- Body coloured front and rear lower bumper mouldings
- Gloss black front grille accent colour
- Body coloured wheel arch and side mouldings
- Larger tail pipe garnish

INTERIOR

- Black roof lining
- Brown Nappa leather
- Heated outer rear seats
- Front seat ventilation
- Wood trim (Upper dashboard and door cards)
- Frameless auto dimming rear-view mirror
- Unique steering wheel stitching
- Steering wheel chrome centre bezel

SAFETY AND SECURITY

- Adaptive LED Headlights (ALH)
- Driver Attention Alert (DAA)
- Rear Smart City Brake Support (SCBS-R)
- 360° View Monitor
- Off Road Mode (Petrol AWD only)



Model shown: Mazda CX-5 165ps 2WD GT Sport
in Soul Red Crystal Metallic paint

MAZDA CX-5 INTERIOR TRIMS AND COLOURATION



PREMIUM BLACK CLOTH
(available on SE-L grade only)



HALF BLACK LEATHERETTE WITH BLACK SUEDE INSERTS
AND LIME GREEN PIPING
(available on Newground grade only)



BLACK LEATHER WITH BROWN STITCHING
(available on Sport grade only)



MAZDA CX-5 INTERIOR TRIMS AND COLOURATION



STONE LEATHER
(Optional on 165ps Sport grade only)



BLACK LEATHER WITH RED STITCHING
(available on Sport Black grade only)



BROWN NAPPA LEATHER
(available on GT Sport grades only)



Factory-fitted options

	BASIC PRICE	VAT	RRP
Stone Leather trim*	£166.67	£33.33	£200

*Available on 165ps Sport models only.

MAZDA CX-5 PAINT FINISH OPTIONS



ARCTIC WHITE SOLID



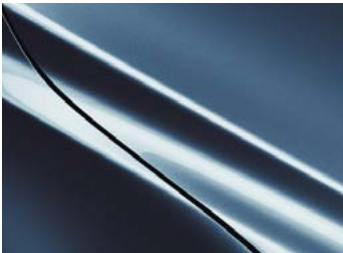
SNOWFLAKE WHITE
PEARLESCENT*~



ZIRCON SAND METALLIC*



POLYMETAL GREY METALLIC*



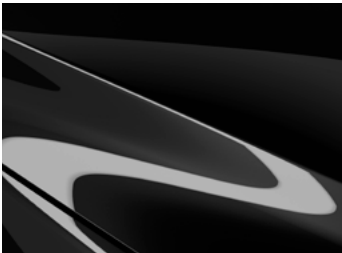
ETERNAL BLUE MICA*



DEEP CRYSTAL BLUE MICA*



MACHINE GREY METALLIC*



JET BLACK MICA*~



SOUL RED CRYSTAL METALLIC*~

Factory-fitted options

	BASIC PRICE	VAT	RRP
Mica/Metallic/Pearlescent Paint (excluding Soul Red Crystal Metallic and Machine Grey Metallic)	£483.33	£96.67	£580
Machine Grey Metallic Paint	£583.33	£116.67	£700
Soul Red Crystal Metallic Paint	£683.33	£136.67	£820

~Newground only available in Arctic White, Zircon Sand Metallic, Polymetal Grey Metallic, Deep Crystal Blue Mica or Machine Grey Metallic paint

*Mica/Metallic/Pearlescent Paint available at additional cost.

MAZDA CX-5 ALLOY WHEELS



17" SILVER WHEELS
Standard on SE-L only



19" BLACK DIAMOND CUT ALLOY WHEELS
Standard on Newground & Sport grades only



19" BLACK ALLOY WHEELS
Standard on Sport Black only



19" BRIGHT ALLOY WHEELS
Standard on GT Sport only

MAZDA CX-5 SPECIFICATIONS

Exterior

		SE-L	Newground	Sport	Sport Black	GT Sport
B-Pillar and C-Pillar garnish:	Satin black	•	•	-	-	-
	Gloss black	-	-	•	•	•
Side moulding garnish	Satin black	•	•	•	-	-
	Gloss black	-	-	-	•	-
	Body coloured	-	-	-	-	•
Bumpers:	Front & rear body coloured with black lower bumper mouldings	•	•	•	-	-
	Front & rear bumper silver under guard & silver side skirts	-	•	-	-	-
	Front & rear body coloured with gloss black lower bumper mouldings	-	-	-	•	-
	Front and rear full body coloured lower bumper mouldings	-	-	-	-	•
Door mirrors:	Body coloured electrically-adjustable, heated, auto power-folding door mirrors	•	-	•	-	•
	Black electrically-adjustable, heated, auto power-folding door mirrors	-	•	-	•	-
Front Grille:	Material black finish grille	-	•	-	-	-
	Gloss black finish grille	•	-	•	•	•
	Lime green accent	-	•	-	-	-
	Red accent	-	-	-	•	-
	Gloss black accent	-	-	-	-	•
Headlights:	LED, with auto headlight levelling	•	•	•	•	•
	High Beam Control (HBC)	•	•	•	•	-
	Dusk-sensing headlights	•	•	•	•	•
	Coming home / leaving home lights	•	•	•	•	•
	Adaptive Front lighting System (AFS)	•	•	•	•	-
	Adaptive LED Headlights (ALH)	-	-	O ¹⁾	-	•
	Signature LED daytime running lights	•	•	•	•	•
Metallic/Mica/Pearlescent paint:		O	O ²⁾	O	O	O
Parking sensors (audible and visual warning):	Front and Rear	•	•	•	•	•
Parking aids:	Reversing camera	-	-	•	•	-
	360° View Monitor (front, rear and side cameras)	-	-	O ¹⁾	-	•
Power liftgate:	Operational by button located on dashboard, key fob or button located on tailgate	-	-	•	•	•
Privacy glass:	Rear side and rear windows	•	•	•	•	•
Rear lights:	Signature LED rear combination lights	•	•	•	•	•
Rear roof spoiler:	Body coloured	•	•	•	•	•
Shark-fin antenna:		•	•	•	•	•
Silver lower side skirts		-	•	-	-	-
Signature Wing	Bright Finish	•	•	•	-	•
	Gloss black	-	-	-	•	-
Sunroof	Power tilt and slide	-	-	• ³⁾	•	•

• = Standard equipment; - = Not available; O = Option available at additional cost.

¹⁾Included within optional Safety Pack, available at additional cost (Not available on 150ps Diesel Models). ²⁾Only Available in Arctic White, Zircon Sand Metallic, Polymetal Grey Metallic, Deep Crystal Blue Mica or Machine Grey Metallic paint. ³⁾Not available on 150ps Diesel models.

Exterior continued

		SE-L	Newground	Sport	Sport Black	GT Sport
Tailpipes:	Single - Chrome tip (Diesel models)	•	-	•	-	-
	Dual - Chrome tip (Petrol models)	•	•	•	-	-
	Large Single - Chrome tip (Diesel models)	-	-	-	-	•
	Large Dual - Chrome tip (Petrol models)	-	-	-	•	•
Tyres and wheels:	17" Silver alloy wheels with 225/65 R17 tyres	•	-	-	-	-
	19" Black diamond cut alloy wheels with 225/55 R19 tyres	-	•	•	-	-
	19" Black alloy wheels with 225/55 R19 tyres	-	-	-	•	-
	19" Bright alloy wheels with 225/55 R19 tyres	-	-	-	-	•
Wipers:	Front, rain-sensing with adjustable sensitivity and speed	•	•	•	•	•
	Front Wiper De-icer - Hot wires located along the drivers side A-pillar and the wiper finishing positions	-	-	•	•	•
	Rear	•	•	•	•	•

• = Standard equipment; - = Not available; O = Option available at additional cost.

Interior

		SE-L	Newground	Sport	Sport Black	GT Sport
12v Electrical power outlet:		•	•	•	•	•
Colour Active Driving Display	Windscreen projected (colour head-up display) featuring Traffic Sign Recognition, vehicle speed including warnings, turn-by-turn navigation and Mazda Radar Cruise Control information.	-	-	•	•	•
Dashboard panel:	Gunmetal inlay	•	-	-	-	-
	Lime green air vent louvre inlay	-	•	-	-	
	Black inlay	-	-	•	-	-
	Black honeycomb inlay	-	-	-	•	-
	Real wood inlay	-	-	-	-	•
Door panel trim:	Cloth with Gunmetal inlay	•	-	-	-	-
	Vinyl with lime green stitch	-	•	-	-	-
	Vinyl with wood grain metal inlay	-	-	•	-	-
	Vinyl with black honeycomb inlay	-	-	-	•	-
	Vinyl with real wood inlay	-	-	-	-	•
Electronic Parking Brake with auto-hold and auto-disengage function		•	•	•	•	•
Gear shift:	Leather-wrapped	•	•	•	•	•
	Drive selection switch (Automatic Petrol models only) - Sport mode	•	•	•	•	•
Grab handles:	Front passenger and two rear, with coat hooks	•	•	•	•	•

• = Standard equipment; - = Not available; O = Option available at additional cost.

Interior continued

		SE-L	Newground	Sport	Sport Black	GT Sport
Interior trim:	Premium black cloth trim	•	-	-	-	-
	Black half leatherette seats with lime green stitching with black suede inserts	-	•	-	-	-
	Black leather seats	-	-	•	-	-
	Stone leather seats	-	-	O ¹⁾	-	-
	Black leather seats with red stitching	-	-	-	•	-
	Brown Nappa leather seat trim	-	-	-	-	•
Interior Mirror:	Auto-dimming rear-view mirror	•	•	•	•	-
	Frameless auto-dimming rear-view mirror	-	-	-	-	•
Meter set display:	Trip computer	•	•	•	•	•
	Colour TFT display (provides speed, traffic signs and Mazda Radar Cruise Control information)	•	•	-	-	-
	Colour 7-inch TFT display (provides speed, traffic signs and Mazda Radar Cruise Control information)	-	-	•	•	•
Roof headlining:	Light (ceiling and pillars)	•	•	•	-	-
	Black (ceiling and pillars)	-	-	-	•	•
Seats (Front):	Driver's seat manual slide, recline, height and lumbar adjustment	•	-	-	-	-
	Front passenger's seat manual slide, recline and height adjustment	•	•	-	-	-
	Driver seat power slide, recline, height and manual lumbar adjustment	-	•	-	-	-
	Driver seat power slide, recline, height and lumbar adjustment with memory function	-	-	•	•	•
	Front passenger's seat power slide, recline and height adjustment	-	-	•	•	•
	Heated with 3-stage setting	-	•	•	•	•
	Ventilated with 3-stage setting	-	-	-	-	•
Seats (Rear):	Three height-adjustable head restraints	•	•	•	•	•
	40:20:40 Karakuri fold-flat seat system	•	•	•	•	•
	Folding centre armrest equipped with USB input and two cup holders	•	•	•	•	•
	Manual recline adjustment	•	•	•	•	•
	Heated outer rear seats with 3-stage setting	-	-	-	-	•
Steering wheel:	Leather-wrapped	•	•	•	•	•
	Telescopic and tilt adjustment	•	•	•	•	•
	Heated	-	-	•	•	•
	Paddle shift for automatic transmission	-	-	•	•	•
Storage spaces:	Door pockets (driver, front passenger and two rear)	•	•	•	•	•
	Seatback pocket (located on rear of front driver and passenger seat)	•	•	•	•	•
	Front centre storage with two cupholders	•	•	•	•	•
	Glovebox with interior illumination	•	•	•	•	•
	Roof mounted sunglasses holder	•	•	•	•	•

• = Standard equipment; - = Not available; O = Option available at additional cost.

¹⁾ Available as an option in combination with Safety Pack (Not available on Diesel Models).

Infotainment

		SE-L	Newground	Sport	Sport Black	GT Sport
Apple CarPlay® & Android Auto™	In-car assistant systems that let you access certain features of your phone through Mazda Connect	•	•	•	•	•
Integrated Bluetooth®:	Allows audio transfer from Bluetooth® devices, hands-free calling and easy access to phone contacts via steering wheel controls or Multimedia Commander	•	•	•	•	•
Mazda Connect (Multimedia System):	AM / FM / DAB audio system with 6 speakers	•	•	-	-	-
	AM / FM / DAB radio featuring 10-Speaker Bose surround sound system with Bose Centerpoint® signal processing and AudioPilot® noise compensation technology.	-	-	•	•	•
	10.25" TFT Colour centre display	•	•	•	•	•
	Steering wheel-mounted audio and Bluetooth® controls	•	•	•	•	•
	USB input	•	•	•	•	•
Mazda Navigation System:	European mapping with alternative route calculations, point of interest search and 5-years free map updates	•	•	•	•	•
Mazda Connected Services:	Connected Services - Accessed via the MyMazda App which provides you with information about your vehicle, you can also access many other features like remote controls, vehicle finder and send a destination to your car.	•	•	•	•	•
Multimedia Commander:	Located between the driver and front passenger, the Multimedia Commander allows easy control of the advanced connectivity and infotainment system, with information displayed on the 10.25" colour centre screen, includes a separate volume control dial	•	•	•	•	•
Wireless Charging		-	-	•	•	•

• = Standard equipment; - = Not available.
Please visit mazda.co.uk for more information.

Comfort and Convenience

		SE-L	Newground	Sport	Sport Black	GT Sport
Air-conditioning:	Dual zone climate-controlled air-conditioning with rear vents	•	•	•	•	•
Cargo Board	Flat fit cargo board	•	-	•	•	•
	Reversible waterproof cargo board	-	•	-	-	-
Cruise Control - Mazda Radar	Cruise Control (MRCC) (Automatic features Stop & Go function)	•	•	•	•	•
Electric windows:	Front and rear, with one-touch auto down / up	•	•	•	•	•
Engine start / stop button		•	•	•	•	•
Gear-shift indicator		•	•	•	•	•
Interior Lighting:	Front & rear with LED lighting	•	•	•	•	•
Luggage compartment:	LED lighting	•	•	•	•	•
	Power outlet	•	•	•	•	•
	Karakuri tonneau cover	•	•	•	•	•
Sun visors:	Driver's and front passenger's with covered vanity mirror and driver's ticket holder	•	•	•	•	•

• = Standard equipment; - = Not available.

Safety and Security

		SE-L	Newground	Sport	Sport Black	GT Sport
Airbags:	Front dual stage driver and single stage front passenger	•	•	•	•	•
	Front side airbags	•	•	•	•	•
	Front and rear curtain airbags	•	•	•	•	•
	Front passenger airbag cut-off sensor	•	•	•	•	•
Anti-lock braking system (ABS)		•	•	•	•	•
Blind Spot Monitoring (BSM) with Rear Cross Traffic Alert (RCTA)	Uses a system of sensors to alert the driver when a vehicle enters a blind spot	•	•	•	•	•
Cruising & Traffic Support (CTS)		•	•	•	•	•
Driver Attention Alert (DAA)	Designed to reduce accidents caused by inattentiveness due to driver fatigue. The system watches inputs and the vehicle's movements in the early stages before fatigue is a factor.	-	-	O ¹⁾	-	•
Dynamic Stability Control (DSC)		•	•	•	•	•
Emergency Stop Signalling system (ESS)		•	•	•	•	•
Emergency tyre repair kit:		•	•	•	•	•
Hill Launch Assist (HLA)	When starting off from an incline, HLA helps prevent the car from rolling backwards when the driver moves their foot from the brake to the accelerator pedal by maintaining an automatic brake.	•	•	•	•	•
ISOFIX child seat anchorage; attached to outer rear seats		•	•	•	•	•
Lane-keep Assist System (LAS) with Lane Departure Warning System (LDWS)	The system detects the line markings on the road surface and instantly warns you in case of unintentional lane departure, whilst also assisting to steer the vehicle to keep it within its lane.	•	•	•	•	•
Off-Road mode	194ps Petrol model only	-	-	-	-	•
Pre-crash safety: Advanced Smart City Brake Support (SCBS)	Front Smart City Brake Support (including autonomous emergency braking) (SCBS)	•	•	•	•	•
	Rear (SCBS-R)	-	-	O ¹⁾	-	•
Remote central locking with deadlocking and automatic door lock when driving		•	•	•	•	•
Smart keyless entry	Allows opening and locking of the vehicle without removing the key from your pocket or bag	-	-	•	•	•
Seatbelts:	Front, 3-point (ELR) x 2 with pre-tensioners	•	•	•	•	•
	Rear, 3-point (ELR) x 3	•	•	•	•	•
Seatbelt reminder audible warning:	Driver, passenger and rear seats	•	•	•	•	•
Thatcham accredited alarm and immobiliser		•	•	•	•	•
Traction Control System (TCS)		•	•	•	•	•
Tyre Pressure Monitoring System (TPMS)		•	•	•	•	•

• = Standard equipment; - = Not available; O = Option available at additional cost.

¹⁾Included within optional Safety Pack, available at additional cost (Not available on 150ps Diesel Models).

MAZDA CX-5 TECHNICAL INFORMATION

Model availability	2.0 Skyactiv-G	2.0 Skyactiv-G	2.5 Skyactiv-G	2.2 Skyactiv-D	2.2 Skyactiv-D	2.2 Skyactiv-D	2.2 Skyactiv-D	2.2 Skyactiv-D	2.2 Skyactiv-D
	Petrol 2WD	Petrol 2WD	Petrol AWD	Diesel 2WD	Diesel 2WD	Diesel 2WD	Diesel 2WD	Diesel AWD	Diesel AWD
	165ps Manual	165ps Automatic	194ps Automatic	150ps Manual	150ps Automatic	184ps Manual	184ps Automatic	184ps Manual	184ps Automatic
SE-L	•	•	-	•	•	-	-	-	-
Newground	•	•	-	-	-	-	-	-	-
Sport	•	•	-	•	•	•	•	-	•
Sport Black	•	•	-	-	-	-	-	-	-
GT Sport	•	•	•	-	-	-	-	•	•

Dimensions		
Overall length / width ¹⁾ / height (mm)		4,575 / 1,845 ¹⁾ / 1,675 (1,680) ²⁾
Wheelbase (mm)		2,700
Ground clearance between the axles – unladen (mm)		192 (200) ²⁾
Front track / Rear track (mm)		1,595 / 1,595
Front headroom ³⁾ / leg room / shoulder room (mm)		1,007 (999) ³⁾ / 1,041 / 1,451
Rear headroom / leg room / shoulder room (mm)		991 / 1,007 / 1,391
Cargo volume acc. to VDA (l) ⁴⁾ :	5-seat mode (to belt line)	522 (510) ⁵⁾
Cargo volume - Catalog Value	2-seat mode	1,638 (1,626) ⁵⁾
Brake type:	Front	Ventilated Discs
	Rear	Solid Discs
Brake dimensions (mm):	Front (petrol/diesel)	297 / 320
	Rear	303
Steering		
Steering gear		Electric Power Assist Steering (Dual Pinion)
Minimum turning circle (kerb to kerb) (m)		5.5
Minimum turning circle (wall to wall) (m)		11.9

¹⁾ Vehicle width excludes mirrors.

²⁾ Figures in brackets are for models with 19" Alloy Wheels.

³⁾ Figures in brackets are for models fitted with power tilt and slide sunroof.

⁴⁾ Cargo volume figure includes under-floor storage.

⁵⁾ Figures in brackets are for Diesel models fitted with a separate AbBlue® tank.



5-door SUV		2.0 SKYACTIV-G	2.0 SKYACTIV-G	2.5 SKYACTIV-G
		Petrol 2WD	Petrol 2WD	Petrol AWD
		165ps Manual	165ps Automatic	194ps Automatic
Displacement (cc)		1,998	1,998	2,488
Bore x Stroke (mm)		83.5 x 91.2	83.5 x 91.2	89.0 x 100
Valves per cylinder		4	4	4
Compression ratio		13:01	13:01	13:01
Gear shift indicator		•	-	-
i-stop system		•	•	•
Cylinder Deactivation		•	-	•
i-ELOOP		-	-	•
PERFORMANCE				
Maximum power	ps (KW) / output	165 (121) / 6,000 rpm	165 (121) / 6,000	194 (143) / 6,000
Max. torque (Nm / rpm)		213 / 4,000	213 / 4,000	258 / 4,000
Acceleration (0-62 mph in seconds)		10.5	9.9	9.3
Top Speed (mph)		125	119	121
FUEL ECONOMY AND CO ₂ EMISSIONS				
WLTP fuel consumption ¹⁾ mpg (l/100km)	Low	34.4 (8.2)	30.4 (9.3) - 31.7 (8.9)	27.2 (10.4)
	Medium	44.1 (6.4)	40.9 (6.9)	36.7 (7.7)
	High	47.9 (5.9) - 48.7 (5.8)	44.8 (6.3)	39.8 (7.1)
	Extra High	38.7 (7.3) - 39.2 (7.2)	36.2 (7.8)	35.3 (8.0)
	Combined	41.5 (6.8)	38.2 (7.4) - 38.7 (7.3)	35.3 (8.0)
WLTP CO ₂ emissions (g/km) ¹⁾	Combined	154-153	166-164	182
EC emission level		Euro Stage6d		
Recommended fuel		Unleaded 95 RON		
Fuel tank capacity (litres)		56	56	58
WEIGHTS				
Kerb weight (kg) incl. driver (75kg) 17" / 19" Alloy wheels		1,592 - 1,620	1,616 - 1,643	1,735
Permitted gross vehicle weight (kg)	Total	2,020	2,035	2,140
	Front/rear	1,015 / 1,005	1,040 / 995	1,100 / 1,040
Towing limit (kg) ²⁾ :	Braked	1,800	2,000	2,000
Maximum roof load (kg)	Roof Rail	75	75	75
	Roof Carrier	50	50	50

• = Standard equipment, – = Not available.

¹⁾ Figures shown are for comparability purposes; only compare fuel consumption and CO₂ figures with other cars tested to the same technical procedures.

These figures may not reflect real life driving results, which will depend upon a number of factors including the accessories fitted (post-registration), variations in weather, driving styles and vehicle load. There is a new test used for fuel consumption and CO₂ figures. The CO₂ figures shown however, are based on the outgoing test cycle and will be used to calculate vehicle tax on first registration.

²⁾ Towing capacity is based on a 12% gradient and tested in accordance with 92/21/EEC as amended by 95/48/EC.

5-door SUV		2.2 SKYACTIV-D	2.2 SKYACTIV-D	2.2 SKYACTIV-D	2.2 SKYACTIV-D	2.2 SKYACTIV-D	2.2 SKYACTIV-D
		Diesel 2WD	Diesel 2WD	Diesel 2WD	Diesel 2WD	Diesel AWD	Diesel AWD
		150ps Manual	150ps Automatic	184ps Manual	184ps Automatic	184ps Manual	184ps Automatic
Displacement (cc)		2,191	2,191	2,191	2,191	2,191	2,191
Bore x Stroke (mm)		86.0 x 94.3	86.0 x 94.3	86.0 x 94.3	86.0 x 94.3	86.0 x 94.3	86.0 x 94.3
Valves per cylinder		4	4	4	4	4	4
Compression ratio		14.4:1	14.4:1	14.4:1	14.4:1	14.4:1	14.4:1
Gear shift indicator		•	•	•	•	•	•
i-stop system		•	•	•	•	•	•
PERFORMANCE							
Maximum power	ps (KW) /	150 (110) / 4,500	150 (110) / 4,500	184 (135) / 4,000	184 (135) / 4,000	184 (135) / 4,000	184 (135) / 4,000
output	rpm						
Max. torque (Nm / rpm)		380 / 1,800-2,600	380 / 1,800-2,600	445 / 2,000	445 / 2,000	445 / 2,000	445 / 2,000
Acceleration (0-62 mph in seconds)		9.9	10.7	9.2	9.3	9.3	9.6
Top Speed (mph)		127	124	129	129	129	129
FUEL ECONOMY AND CO ₂ EMISSIONS							
WLTP fuel consumption ¹⁾ mpg (l/100km)	Low	45.6 (6.2) - 47.9 (5.9)	37.7 (7.5)	45.6 (6.2)	37.7 (7.5)	42.2 (6.7)	35.8 (7.9)
	Medium	53.3 (5.3)	47.9 (5.9) - 48.7 (5.8)	53.3 (5.3)	47.9 (5.9)	47.9 (5.9)	43.5 (6.5)
	High	57.6 (4.9) - 60.1 (4.7)	54.3 (5.2)	60.1 (4.7)	54.3 (5.2)	51.4 (5.0)	52.3 (5.4)
	Extra High	44.8 (6.3)	42.8 (6.6) - 43.5 (6.5)	44.8 (6.3)	43.5 (6.5)	40.4 (7.0)	39.2 (7.2)
	Combined	50.4 (5.6)	46.3 (6.1)	50.4 (5.6)	46.3 (6.1)	44.8 (6.3)	42.8 (6.6)
WLTP CO ₂ emissions (g/km) ¹⁾	Combined	147	160	147	160	165	173
EC emission level		Euro Stage6d					
Recommended fuel		Diesel					
Fuel tank capacity (litres)		56	56	56	56	58	58
WEIGHTS							
Kerb weight (kg) incl. driver (75kg) 17" / 19" Alloy wheels		1,742 - 1,757	1,747 - 1,772	1,757	1,774	1,823	1,835
Permitted gross vehicle weight (kg)	Total	2,143	2,143	2,143	2,143	2,220	2,235
	Front/rear	1,120 / 1,010	1,132 / 1,011	1,120 / 1,010	1,133 / 1,010	1,155 / 1,065	1,170 / 1,065
Towing limit (kg) ²⁾ :	Braked	2,000	2,000	2,000	2,000	2,000	2,100
Maximum roof load (kg)	Roof Rail	75	75	75	75	75	75
	Roof Carrier	50	50	50	50	50	50

• = Standard equipment, – = Not available.

¹⁾ Figures shown are for comparability purposes; only compare fuel consumption and CO₂ figures with other cars tested to the same technical procedures.

These figures may not reflect real life driving results, which will depend upon a number of factors including the accessories fitted (post-registration), variations in weather, driving styles and vehicle load. There is a new test used for fuel consumption and CO₂ figures. The CO₂ figures shown however, are based on the outgoing test cycle and will be used to calculate vehicle tax on first registration.

²⁾ Towing capacity is based on a 12% gradient and tested in accordance with 92/21/EEC as amended by 95/48/EC.

SKYACTIV ENGINE TECHNOLOGIES

SKYACTIV-G

The Skyactiv-G engine is a highly-efficient direct-injection petrol engine, that achieves impressive engine efficiency thanks to the high compression combustion, resulting in excellent fuel economy and competitive CO₂ emissions.

Skyactiv-G also features cylinder deactivation*, delivering further improvements in economy and efficiency by automatically switching between two-cylinder and four-cylinder operation when cruising at constant speeds and not when under heavy loads. The engine shuts down two of the four cylinders with fuel injection and injection timing precisely controlled, so that the cylinder deactivation isn't noticeable to the driver.

*Not available on 2.0 165ps automatic models and diesel models.

I-ELOOP*

The i-ELOOP system recovers energy while decelerating and braking. Learn how the recovered energy is used to power electrical systems such as the audio, air conditioning and headlights and how to monitor and maximize its benefits.

*i-ELOOP available on 2.5 194ps model only.

SKYACTIV-D

Our extremely low compression Skyactiv-D diesels are among the most efficient engines available, especially under real-world driving conditions. The latest technology does not only reduce emissions, but also enhances response and noise behaviour. Impressive torque and strong performance paired with our latest Skyactiv chassis and transmissions, resulting in a refined, engaging drive.



SKYACTIV-VEHICLE DYNAMICS: TRANSMISSIONS, CHASSIS AND BODY

TRANSMISSIONS

Skyactiv-MT is a light and compact manual transmission system that combines superior fuel economy with the crisp shifting feel of a sports car, ensuring perfect control.

Also available is Mazda's highly-efficient, 6-speed Skyactiv-Drive automatic transmission. Featuring the best attributes of CVT, Dual Clutch and conventional automatic transmissions, Skyactiv-Drive provides you with a direct feel with smooth gear shifts leading to great fuel economy.



SKYACTIV-CHASSIS

Providing a lightweight chassis that delivers driving pleasure and comfort, leading to that pure 'Jinba-ittai' oneness between car and driver. The perfectly fine tuned chassis provides our famed driving experience of agility at low and medium speeds, and stability at motorway speeds for both driving pleasure and comfort.



SKYACTIV-BODY

For a car to excel in its basic functions – accelerate, turn and stop – it must have a lean body, but also be sturdy to ensure safety. Mazda CX-5's body has been designed around these elements leading to a light, rigid and robust body that ensures safe and joyful driving.

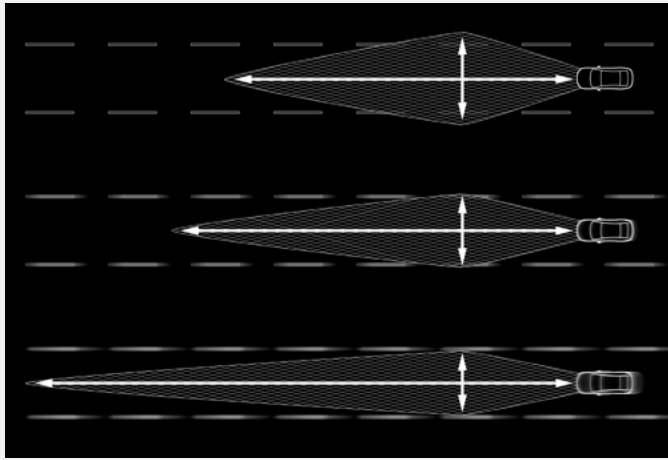


ADVANCED SAFETY TECHNOLOGY

i-ACTIV AWD

Whether you are on the motorway on a dark and rainy night or driving up a snowy country road, Mazda's all-wheel-drive system is designed to provide safety and comfort with fuel efficiency. Our engineers have developed i-ACTIV AWD to constantly monitor road conditions in real-time, watching for tiny variations in wheel speed that a driver would never notice. The system proactively controls the distribution of torque to all four wheels providing solid and predictable handling for all-road performance.

(Available on 194ps GT Sport and 184ps Sport & GT Sport models)



ADAPTIVE LED HEADLIGHTS (ALH)

Further improves night-time visibility with a range of approximately 200m. It makes it easier to identify pedestrians and other objects and raise the level of reassurance and confidence when driving at night by automatically switching high beams on and off. It also distributes light from the high beams in three different patterns depending on the car's speed and features six-stage directional control linked to the steering angle.

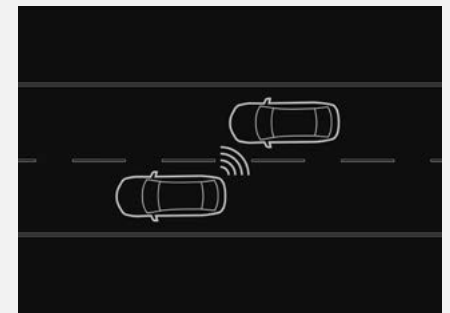
(Optional on 165ps & 184ps Sport models and standard on GT Sport models)

BLIND SPOT MONITORING (BSM) WITH REAR CROSS TRAFFIC ALERT (RCTA)

BSM uses radars mounted in the rear bumper to detect vehicles approaching from behind and in the adjacent lane. It alerts the driver to the presence of vehicles in the blind spot on either side by displaying an icon in the appropriate door mirror. If the driver indicates to change lanes with a vehicle in the blind spot, the icon flashes and a warning beep is sounded.

RCTA is designed to help you make sure it's safe to start backing up. The system uses the same radars and indicators as BSM to watch for vehicles coming from both sides and alert the driver when they come near.

(Standard across the range)



ADVANCED SAFETY TECHNOLOGY



COLOUR ACTIVE DRIVING DISPLAY (HEAD-UP DISPLAY)

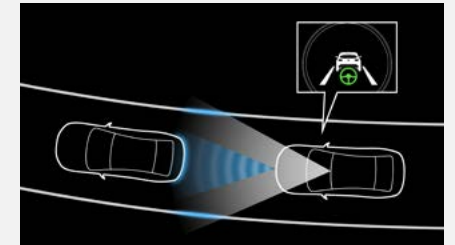
The system includes Traffic Sign Recognition and projects full-colour information directly onto the windscreen within the driver's line of sight. The displayed information is divided into upper and lower sections: driving information, including navigation turn-by-turn direction and speed limit information is displayed in the upper section, while vehicle status, including current speed and advanced safety equipment status, is displayed in the lower section.

(Standard from Sport up)

CRUISING & TRAFFIC SUPPORT (CTS)

Automatically operates the accelerator and brake pedals to maintain a proper trailing distance between the Mazda CX-5 and the vehicle ahead. In addition, it assists with steering operations to keep the car in its proper lane. CTS contributes to reducing driver fatigue, supporting a safer, more reassuring and more comfortable driving experience.

(Standard across the range)



OFF-ROAD MODE

Enables the driver to switch between normal driving mode and Off-road mode, engaging in a higher-stability driving mode for use on loose surfaces such as mud, or gravel. Allowing you to stay in command of the vehicle instilling confidence and driving enjoyment no matter where the road or track takes you.

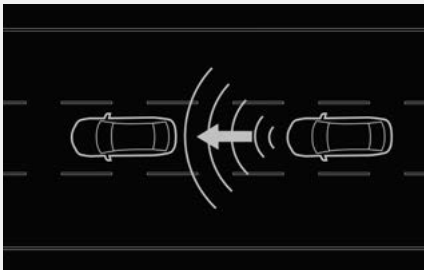
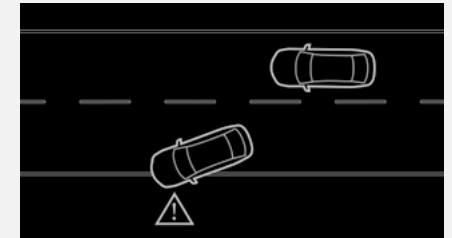
(Standard on 194ps GT Sport models)

ADVANCED SAFETY TECHNOLOGY

LANE DEPARTURE WARNING SYSTEM (LDWS) WITH LANE KEEP ASSIST SYSTEM (LAS)

Designed to prevent your vehicle from inadvertently straying from its lane. A front view camera monitors the road ahead and calculates the car's position relative to the lane markings. If the system detects the vehicle is moving out of its lane unintentionally, the steering wheel will vibrate and an audible alert will sound. The system will also take corrective action to help you stay within the lanes through assisted steering.

(Standard across the range)



MAZDA RADAR CRUISE CONTROL (MRCC)

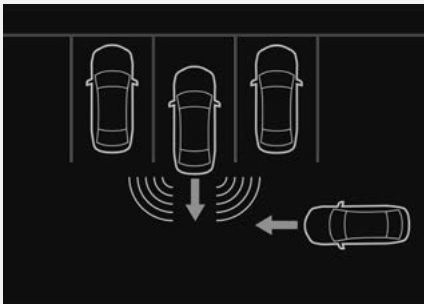
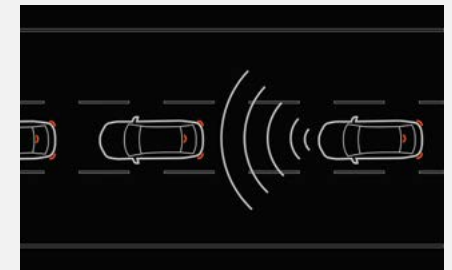
To activate, the driver sets a maximum speed (just as with cruise control) and size of the gap to maintain. The radar watches for traffic ahead and once the system senses a vehicle in front, the car will slow down and speed up automatically maintaining the driver's pre-set distance. Automatic models also have the additional feature of 'Stop & Go', meaning the vehicle will automatically accelerate and brake in start/stop traffic with minimal input from the driver.

(Standard across the range)

SMART BRAKE SUPPORT – FRONT (SBS)

Alerts the driver of a possible collision using the warning indications in the display and a warning sound if the front radar sensor and Forward Sensing Camera (FSC) determine that there is the possibility of a collision with a vehicle, pedestrian, or a bicycle ahead. Furthermore, if a collision is unavoidable, the automatic brake control is performed to reduce damage in the event of a collision. In addition, when the driver depresses the brake pedal, the brakes are applied firmly and quickly to assist.

(Standard across the range)



SMART BRAKE SUPPORT – REAR (SBS-R)

Avoid or help reduce damage in the event of a possible collision by operating the brake control when the system's sensors detect an obstruction at the rear.

SMART BRAKE SUPPORT – REAR CROSSING (SBS-RC)

Assists in avoiding collisions and reducing damage in the event of a collision by applying the brakes if there is the possibility of collision with a vehicle approaching from the rear while you are reversing out of parking space.

(Optional on 165ps & 184ps Sport models and standard on GT Sport models)

MAZDA SERVICES

MAZDA SERVICE PLANS

MODEL	ENGINE	PRICE
Mazda CX-5	SKYACTIV-G	£679.00
Mazda CX-5	SKYACTIV-D	£779.00

Take the hassle out of servicing your car by opting for a Mazda Service Plan from your Mazda dealer. For a one off payment or manageable monthly sum, your annual Mazda servicing can be covered for up to 3 years. Contact your Mazda dealer for more information on the options available. At participating dealers only.

The maximum service interval for your Mazda is 12,500 miles or 12 months whichever occurs first, however, the servicing intervals may reduce based on the style of driving and the conditions under which your vehicle is operated.



Mazda Service Plans cover parts, labour & fluids at the prevailing VAT rate for the first three scheduled services. You have the choice of paying for your Mazda Service Plan with a one-off payment, or by monthly Direct Debit payments over the duration of the Plan. Please contact your Mazda Authorised Dealer for more information. The servicing for Mazda Service Plans can only be carried out at a Mazda Authorised Dealer. At participating Dealers only and plan must be activated prior to the vehicle's first service.

VEHICLE TAX RATES

CO ₂ EMISSIONS FIGURE (G/KM)	PETROL & RDE2 DIESEL - FIRST YEAR RATE	DIESEL NON-RDE2 - FIRST YEAR RATE*	STANDARD RATE
0	£0	£0	£0
1-50	£10	£25	£155
51-75	£25	£115	£155
76-90	£115	£140	£155
91-100	£140	£160	£155
101-110	£160	£180	£155
111-130	£180	£220	£155
131-150	£220	£555	£155
151-170	£555	£895	£155
171-190	£895	£1,345	£155
191-225	£1,345	£1,910	£155
226-255	£1,910	£2,245	£155
Over 255	£2,245	£2,245	£155

First-year rate is paid when first registering a vehicle and is for the first 12 months Vehicle Excise Duty. After the first 12 months, the standard rate applicable at that time is payable.

Vehicles with a list price >£40k will be subject to a premium of £335 over the Standard Rate for 5 years. This does not apply to zero-emission vehicles.

*Rate applies to diesel vehicles registered from 01 April 2018 that do not meet the RDE2 standard.

MAZDA FINANCIAL SERVICES

Mazda Financial Services offers a variety of finance and insurance products to suit the needs of both private and business customers. With our wide range of plans and services, no-one is more committed to delivering complete motoring confidence and total peace of mind than Mazda and Mazda Financial Services.

MAZDA INSURANCE

When you buy your new Mazda from a Mazda franchised dealer, we'll give you free comprehensive Driveaway Insurance so you can get on the road there and then. Upgrade to our annual cover and benefit from our Mazda Accident Repair Promise all year round. In the event of an accident, unlike most other insurers, we guarantee to repair your Mazda at a Mazda Approved Bodyshop using only Mazda Genuine Parts. This helps to protect your Mazda's safety rating, resale value and manufacturer warranty. Plus, you'll also get windscreen damage cover, EU cover and a complimentary courtesy car. We'll even pay your cancellation fee if you're insured elsewhere*. Eligibility criteria, terms and conditions apply.

Ask your dealer or call Mazda Insurance on 0330 102 7995.

Get a quote online at www.mazdacarinsurance.co.uk

Mazda Insurance is arranged and administered by Verex Insurance Services Ltd which arranges policies from a panel of insurers.

*Offer not available online. Offer conditions apply.

MAZDA EXCESS RETURN VOUCHER

When you apply for Free Driveaway Insurance for your new Mazda, you'll also receive a free 1-year Excess Return voucher which pays back up to £250 of your insurance excess cost, regardless of who you're insured with, if you use our Call Mazda First service. If you have a Mazda Excess Return voucher and need to make an insurance claim, simply Call Mazda First before your insurer on 0800 015 0367.

FREE MAZDA ACCIDENT AFTERCARE

In the event of an accident, Call Mazda First 0800 015 0367 before your insurer for free 24-hour Accident AfterCare and to redeem your £250 Excess Return voucher.

Our dedicated case handlers will liaise with your insurer and arrange Mazda Genuine Parts and repairs at a Mazda Approved Bodyshop, keeping your Mazda 100% Mazda and maintaining your Mazda warranties. We'll also provide accident recovery if your Mazda isn't driveable and a free courtesy car during the repair. Terms and conditions apply.

Save 0800 015 0367 to your mobile phone.

TAX FREE – DIPLOMATIC AND MILITARY SALES

For further information contact your Mazda dealer or contact Mazda on 03457 48 48 48.

MOTABILITY

For all Motability enquiries please contact your Mazda dealer or contact Mazda on 03457 48 48 48.

This price list, dated 11 October 2021, supersedes all previous price lists. It includes changes to Vehicle Excise Duty as confirmed in the October 2018 budget affecting estimated 'On the Road' prices. Final prices shown are estimated 'On the Road' prices and are inclusive of number plates, 12 months' Vehicle Excise Duty and first registration fee. Certain models may be subject to changes in CO₂ emission levels and Vehicle Excise Duty Bands. Due to ongoing updates the specification (including fuel consumption, CO₂ emissions and equipment) of the vehicle you order and receive may be different to that detailed in this guide. Please speak to your dealer for the latest information. Images may not be to UK specification. Finance subject to status. Terms and conditions apply. Applicants must be 18 or over. Guarantee may be required. Mazda Financial Services, RH1 1SR.

DRIVE TOGETHER

Mazda Motors UK Limited reserves the right to introduce changes in specification and equipment due to its ongoing product development. Prices are subject to change without prior notice.

Bose, Apple CarPlay® and Android Auto™ are registered trademarks in the U.S. and other countries. Used with permission. The Bluetooth® word mark and logos are owned by the Bluetooth SIG, Inc. and any use of such marks by Mazda Motor Corporation is under license.

Other trademarks and trade names are those of their respective owners.

www.mazda.co.uk

Mazda Helpline: 03457 48 48 48

Effective from 11 October 2021

Part number: 810079632